

El-Jebel

FINISH

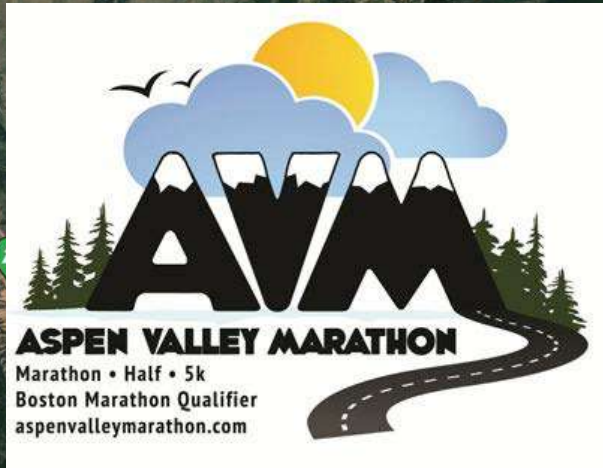
# MARATHON






BASALT

SNOWMASS

WOODY CREEK

SNOWMASS VILLAGE



-  Start Line
-  Finish Line
-  Mile marker
-  Marathon Path
-  Highway 82

23 Basalt

21

24

25

26

20

19

18

17

16

15

14

13

12

11

10

9

8

7

6

5

4

3

2

1

Sloane Peak

Rocky Fork Picnic Area

The Other Side Equine Fitness & Rehab

Triple Peak

Woody Creek

Larkspur Mountain

Margy's Hut

Mt Yeckel

Bald Knob





Red Mountain


Mass Head

Aspen Snowmass Ski Resort

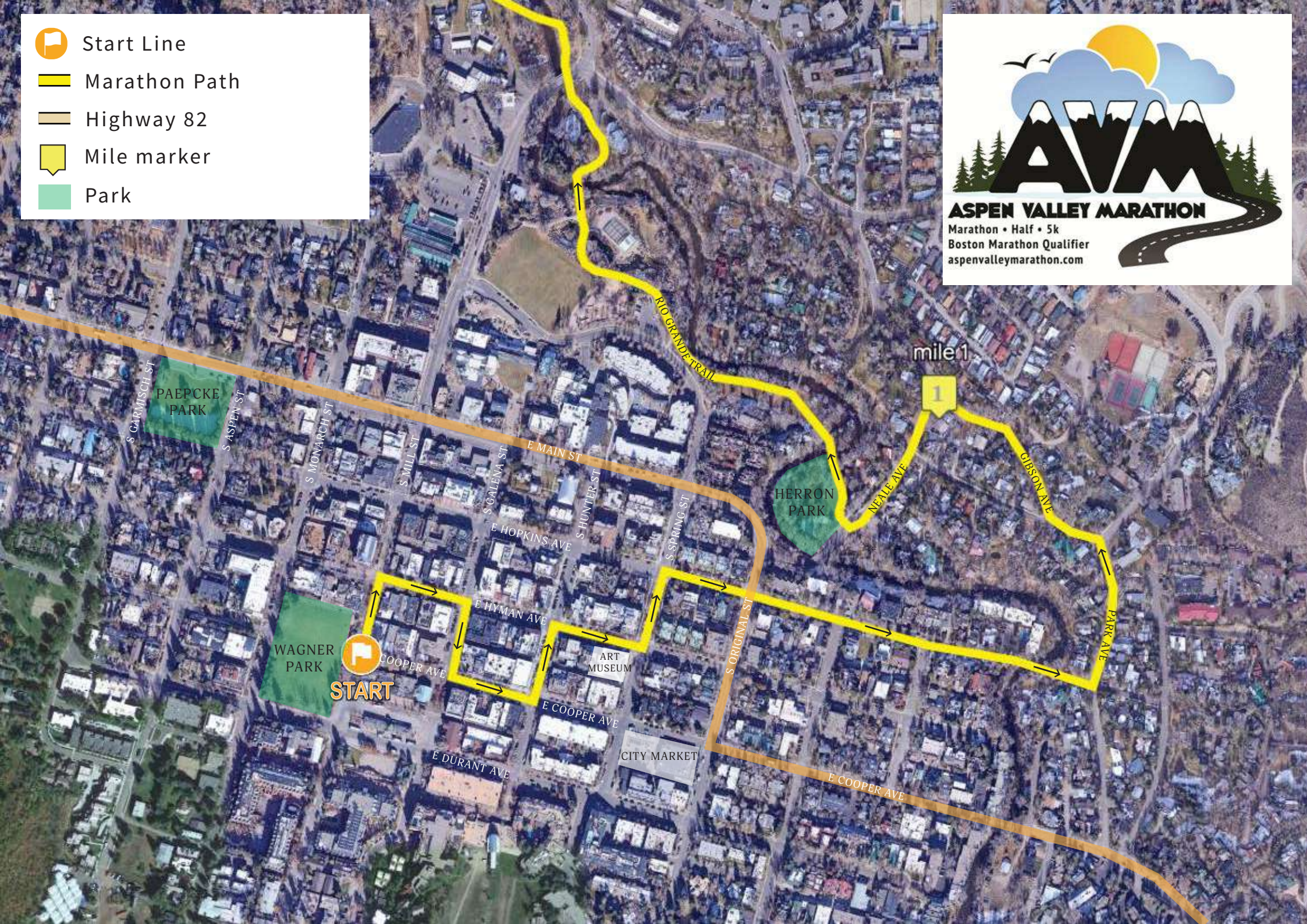
Burnt Mountain

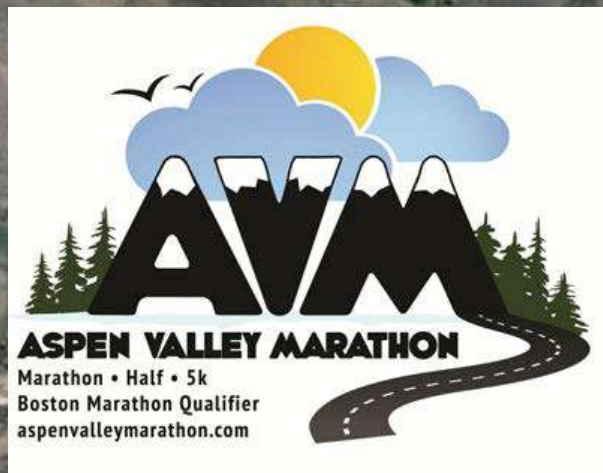
Aspen Highlands Ski Resort  
Cerrado temporalmente

-  Start Line
-  Marathon Path
-  Highway 82
-  Mile marker
-  Park



**ASPEN VALLEY MARATHON**  
 Marathon • Half • 5k  
 Boston Marathon Qualifier  
 aspenvalleymarathon.com





23 mile 23

mile 24

mile 25

FINISH



BASALT RIVER PARK

mile 22

mile 21

mile 26

mile 20



Finish Line



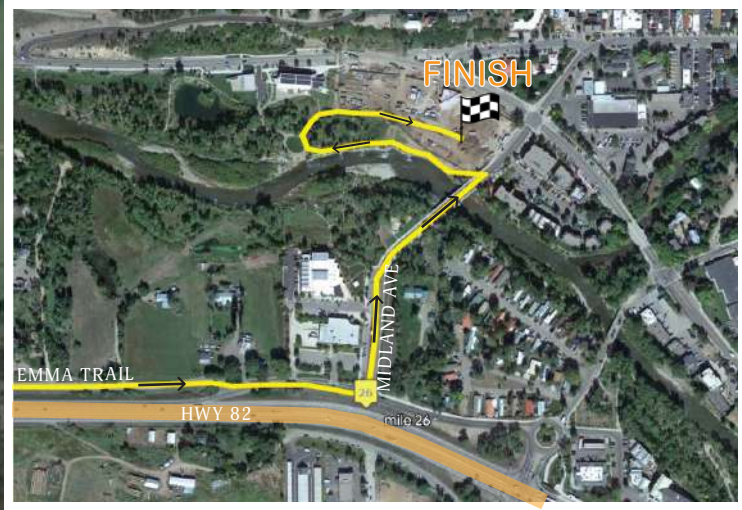
Marathon Path



Highway 82



Mile marker



FINISH



EMMA TRAIL

HWY 82

mile 26

MIDLAND AVE

HOOKS LN

EMMA ROAD

EMMA ROAD

EMMA TRAIL

HWY 82

EMMA TRAIL

HWY 82

RIO GRANDE TRAIL

RIO GRANDE TRAIL

HWY 82

HWY 82

SOPRIS CREEK RD

MIDLAND AVE